



Principal's Report

Friday, 8th August 2025

Aden in Year 9 has certainly been in the media following the parliamentary reading of his letter to Dan Tehan MP about the effects of the drought in SW Victoria. Aden has been interviewed by Fitzmedia and the Warrnambool Standard this week, with an article about Aden published in the Standard under the heading of 'Agricultural crisis unfolding in real time'. Aden's voice is being heard locally and nationally around this significant issue, highlighting the fact that consequences of the drought continue, despite the rainfall that has occurred over the past few weeks. I note again that is not every day that the writing of a school student reaches local media and Parliament House - well done Aden!

A big congratulations also to Grace in Year 9, who this week was the recipient of a NAPLAN Certificate of Achievement for significantly improving her reading results from Year 7 to Year 9. Grace has shown strong growth in her reading skills over the past two years, and it is pleasing to see that this has been recognised by the Education Department. Well done!



Even though the weather is currently wet and cold, I am thinking ahead to the approaching bushfire season, and the annual plans and actions that need to be in place to manage the foreseeable risks of the summer. The planned maintenance program in term one provided a broad upgrade of the compliance of our stadium as a Shelter in Place location for our school and local community, adding additional ember and fire protection to this building, and I am meeting with Moyne Shire staff next month to discuss how our school facilities could be utilised if a natural disaster was to play out in our district at some future time. The rubbish heap at the southeast corner of the school property has been pushed up ready for burning, and a managed burn will occur when the weather is right. **Our school was informed this week that our Bushfire At-Risk Rating is once again set at Category 3 - which means that we will close on any day that is forecast as Catastrophic in the South West fire district;** please refer to the 'School preparations for the bushfire season' flyer in this newsletter for further information about our school BARR, and the implications of this over the summer season.

National Science Week will be celebrated across universities, schools, research institutions, libraries, museums, and science centres in the week beginning Monday 11th August, and as always presents a great opportunity to highlight the relevance and mystery of science in our everyday lives. **A Family Science Evening will be held during National Science Week on Thursday 14th August** and will be conducted by secondary science teachers in Room 01, from 6:30 to 8:30pm. This event will be lots of fun, will feature student science assistants, and will involve lots of experiments and interactive science activities. Keep an eye out for flyers advertising our Family Science Evening in newsletter and social media posts, and please take the opportunity to come along - this event is open to primary and secondary students, parents, grandparents and extended family members.

Next week is also Bullying NO WAY Week, and a range of primary and secondary activities have been organised across this week that will highlight the importance of everyone working together to make sure that bullying is not a feature of our school or wider community. Lessons with classroom, adolescent health and VCE VM teachers will focus on tips, tools and strategies to best respond to bullying, and the week will finish with a Wear A Splash of Purple Day on Friday August 15. **Please remember that this will not be an out of uniform day, but rather a day in which to add something purple to accessorise your usual uniform and to show support for taking a stand against bullying – a purple scarf, jumper, headband or beanie would be fine.** I will be wearing purple socks on this day! Bullying NO WAY Week is being organised by the wellbeing team at our school and will complement the excellent work that our Student Vice students have initiated in promoting anti-bullying events this year.



Please note also that a Book Week dress up day and Special Person celebration will be happening at school on Wednesday 20th August, with opportunities for primary class visits between 9:15am and 10:30am, a Book Week Parade on the tennis court area at 10:30am, and then a shared morning tea for students, staff and visitors in the library at recess. As always, parents, grandparents and other special people are warmly invited to attend this event, and to stay for a celebratory morning tea at recess. Book Week is a national celebration of literature and reading, and every year The Children's Book Council of Australia presents the annual Children's Book of the Year Awards during this week; it is interesting to note that in 2025 the Book Council celebrates its 80th anniversary of these awards.

Have a great weekend everyone,

Mr Ralph
Principal

School preparations for the bushfire season

Each year, to prepare for bushfires and grassfires, schools and early childhood services complete a range of activities.

The Department of Education runs an annual fire risk assessment of schools and early childhood services. They are allocated a category of risk (Categories 0 to 4) and are published on the Bushfire At-Risk Register (BARR). **Our school is noted as being at BARR Category 3.**



All schools and early childhood services listed on the BARR and Category 4 list will also close when a Catastrophic fire danger rating day is forecast in their fire weather district.

When the Bureau of Meteorology provides public fire danger rating forecasts or fire weather warnings, they use fire weather district areas. In Victoria, there are 9 fire weather districts, which are based on Local Government Area boundaries. Our school is in the **South West fire district**.

As part of preparing our school for the fire season, we are currently updating and completing our annual Emergency Management Plan and have organised for tree trimming, ground works and gutter clearing to occur from term three 2025 to April 2025 in support of this plan.

What does this mean for our school?

Our school has been identified as being at potential risk of bushfire or grassfire and is designated as a BARR Category 3 school.

Our school will **close** on a day forecasted as **Catastrophic fire danger rating** in **South West fire district**.

What is the department's policy?

The department's [Bushfire and Grassfire Preparedness Policy](#) requires all schools and early childhood services on the BARR and the Category 4 list to close when a Catastrophic fire danger rating day is forecast in their fire weather district. All school bus routes which travel in or through a district with Catastrophic fire danger must also be cancelled.

When will our school be closed due to Catastrophic fire danger?

Our school will **close** on a day forecasted as **Catastrophic fire danger rating** in **South West fire district**.

Closure of the school due to a forecast Catastrophic day will be confirmed on the day prior and we will provide families with advice before the end of the school day. Any information regarding potential or confirmed Catastrophic fire danger days will be communicated to you by Compass and email.

Once confirmed, the decision to close will not change, even if the weather forecast changes. This is to avoid confusion and help your family plan alternative care arrangements for your child. It is also important to be aware that:

- No one will be on site on days where the school is closed due to a forecast Catastrophic day.
- Out-of-school-hours care will also be cancelled on these days.
- All bus routes that travel through the Catastrophic area will be cancelled.
- School camps will be cancelled if a Catastrophic fire danger rating day is forecast for fire weather district in which the camp is located, or if the travel involves passing through areas that have Catastrophic fire danger.

Families are encouraged to action their Bushfire Survival Plan on Catastrophic fire danger rating days. **On such days, children should never be left at home alone or in the care of older children.**

For those of us living in a bushfire prone area, the Country Fire Authority (CFA) advises that when Catastrophic days are forecast, the safest option is to leave the night before or early on the morning of the Catastrophic day.

What can families and the school community do to help us prepare?

- Ensure we have your current contact details, including your mobile phone numbers.
- Keep in touch with us by reading our newsletters, reading compass notifications, by talking to your child's teacher or any other member of the teaching staff about our emergency management plan.
- Make sure your family's bushfire survival plan is up-to-date and includes alternative care arrangements in the event that our school is closed due to elevated fire danger or closed due to a Catastrophic fire danger. Further information can be found on the [CFA's website](#).
- Action your family's bushfire survival plan if your own triggers are met. Our school community may be spread out across many areas and some families may be at higher risk than others. Your family's safety is critical, so please let us know if you are actioning your bushfire survival plan and if your children will be absent on these days.
- If your child is old enough, talk to [them about bushfires](#) and your family's bushfire survival plan.

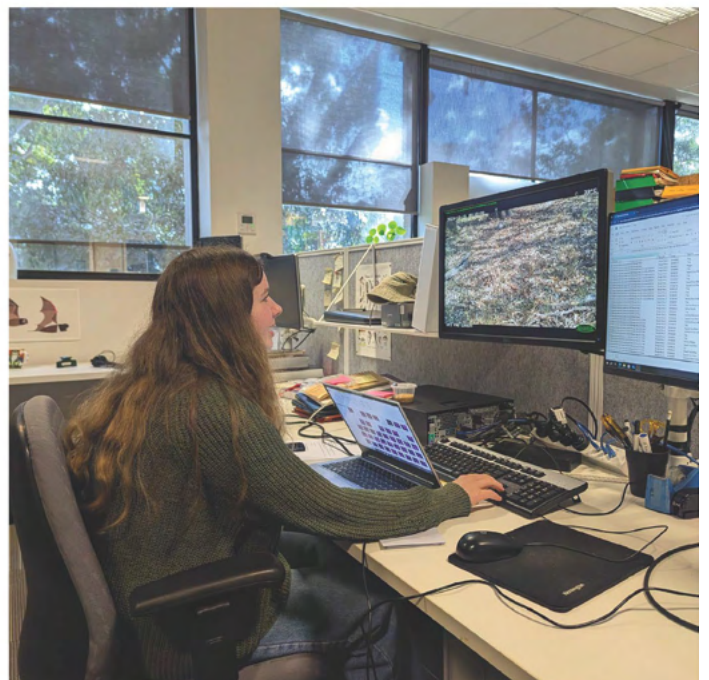
You can find more information on emergencies, warnings and preparedness actions here:

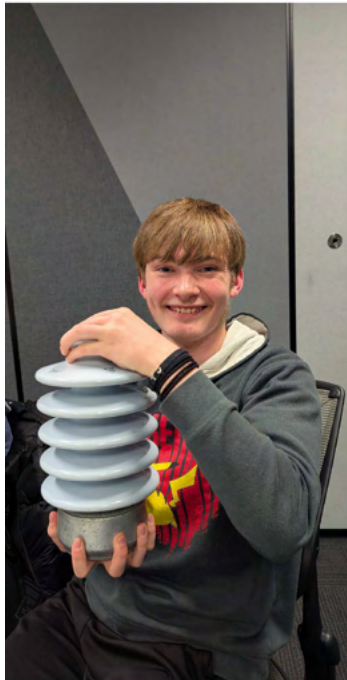
- VicEmergency app – that can be downloaded on your android and iOS mobile devices
- VicEmergency Hotline (1800 226 226)
- Website <https://emergency.vic.gov.au>
- Facebook (<https://www.facebook.com/vicemergency>)
- Twitter (<https://twitter.com/vicemergency>)
- ABC local radio, Sky News and other emergency broadcasters



YR 11 WORK EXPERIENCE

Melbourne 2025





2025 Science Night

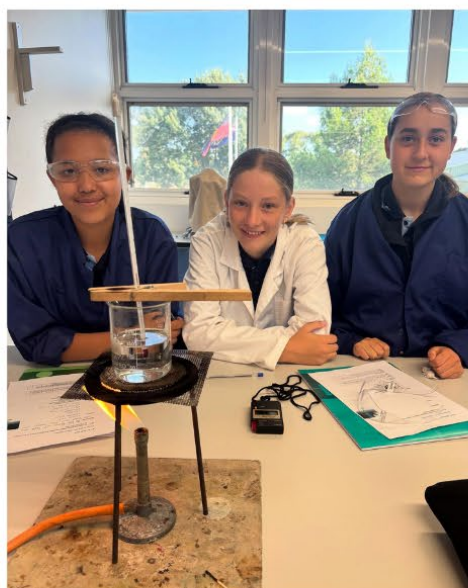
National Science Week will be celebrated across universities, schools, research institutions, libraries, museums and science centres in the week beginning Monday 11th August, and as always is a great opportunity to highlight the relevance and mystery of science in our everyday lives.

Who: All are welcome! Primary & secondary students and families

When: Thursday August 14, 6.30-8.30pm

Where: Room 1 just past the office

What: This event will be lots of fun, will feature student science assistants, and will involve lots of experiments and interactive science activities.





Be Bold. Be Kind.
Speak Up.

BULLYING NO WAY WEEK
11TH - 15TH AUGUST 2025

Wear a splash of purple

Friday 15th August

Purple is the Bullying No Way hero colour. It represents peace, strength and empowerment to take a stand against bullying behaviour.

On **Friday 15th August** you are invited to wear a splash of purple with your school uniform to help consolidate the end of BULLYING NO WAY WEEK

This is not a casual clothes day!

Ideas: Add a scarf, wear a purple tshirt/jumper, wear purple socks or a purple headband. Use your imagination!



VCE Information Evening



WHO IS THIS EVENING FOR:

Students who will be completing VCE in 2026. This includes all year 10 students and their families. We also welcome any interested Year 9 families.



WHEN AND WHERE:

Tuesday August 19th in the college library



WHAT WILL THE EVENING INCLUDE:

- Information Session 6-7pm
- Subject Expo, Industry Guests and Supper 7-8pm





SchoolTV

IN THIS ADDITION: BULLYING

Bullying is an ongoing or repeated misuse of power in relationships, with the intention to cause deliberate psychological harm. Bullying behaviours can be verbal, physical or social. It can happen in person or online, via various digital platforms and devices and it can be obvious or hidden. Bullying in any form or for any reason can have immediate, medium and long-term effects on those involved, including bystanders.

Despite the efforts made to reduce bullying behaviours, the research tells us that one in four students still report being bullied every few weeks. However, not all negative behaviour should be considered bullying. The key difference is that bullying does not stop on its own. It's important young people learn how to identify behaviours that are rude, behaviours that are mean, and behaviours that are related to bullying.

Often the reasons for bullying can be complex. Some young people do it to get approval from others, some do it to regain control, whilst others may do it because it makes them feel safe. Supporting young people as they work through their emotions will help them unpack the motivation and reason behind the behaviour.

In this edition of SchoolTV, caregivers can better understand why some young people engage in bullying behaviours and what to do to support a child experiencing it.

We hope you take time to reflect on the information offered in this edition of SchoolTV and we always welcome your feedback. If you have any concerns about your child, please contact the school wellbeing team for further information or seek medical or professional help.

Here is the link to the **Bullying** edition of SchoolTV

<https://hawkesdalecol.vic.schooltv.me/newsletter/bullying>



Be Bold. Be Kind. Speak Up.

Next week is Bullying No Way week and during the week we will be engaging students in meaningful discussions and activities aimed at promoting empathy, understanding and respect for diversity. The theme for this year's campaign is **Be Bold. Be Kind. Speak Up.**

It takes a community to be brave and address bullying behaviours, within and beyond the school gate. Students can be bold, kind and speak up to support others being bullied. While trusted adults are there to support children and young people learn how to be kind to each other and report bullying.

By working collaboratively within our community, we can collectively help reduce bullying. Families play an important role in helping children understand bullying and know how to respond to it.

If your child tells you about things at school, or you observe something in public that involves conflict or bullying, take the opportunity to talk about what bullying is. You can learn more about what defines bullying at bullyingnoway.gov.au.

Questions you could ask:

What do you think bullying is?

Have you seen it? How did you feel?

Have you ever felt scared at school because of bullying?

As well as me, who are the other adults you would talk to when it comes to things like bullying?

Have you or your friends left other kids out on purpose? Do you think that was bullying? Why or why not?

Have you ever tried to help someone who is being bullied? What happened?

What would you do if it happens again?

Remind your child that bullying is never okay and discuss how they can respond safely if they experience or witness it. Encourage them to seek help from a trusted adult and keep seeking support if needed.

By promoting open communication, we empower children to stand up against bullying and create a safer environment where everyone can feel that they belong.

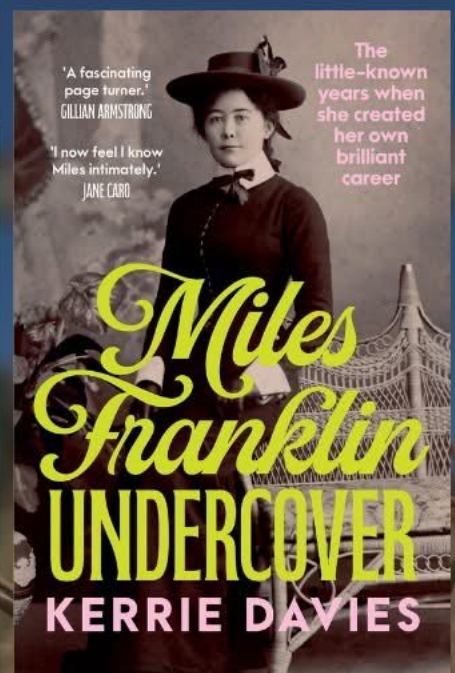
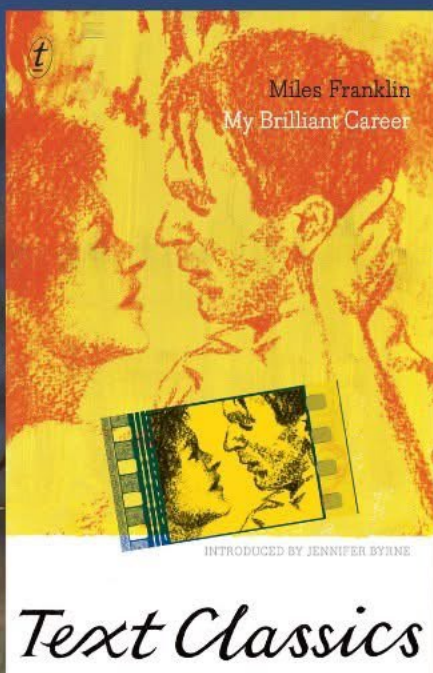
If you have concerns that your child is experiencing bullying behaviours, please contact their classroom teacher or Year Level Coordinator in the first instance.

For more information visit <https://bullyingnoway.gov.au/> or <https://hawkesdalecol.vic.schooltv.me/newsletter/bullying>

You can also find our school bullying prevention policy on our school website and via this link:

<https://www.hawkesdalecol.vic.edu.au/source/2025%20Bullying%20Prevention%20Policy.pdf>

Calling all readers!



Read and share your impressions in 100 words or less for your chance to win!



FRIENDS OF YATMERONG & PENSHERST VOLCANOES DISCOVERY CENTRE PRESENT

Stones, Springs & WILD THINGS

COMMUNITY SEMINAR

RSVP 2 August via Humanitix or Alison Farrar 0436693463

10AM - 3.30 PM SATURDAY AUGUST 16 2025
PENSHERST MEMORIAL HALL LUNCH PROVIDED NO COST TO ATTEND
 21 Martin St Penshurst

Dr James Driscoll Monash Uni
 Enlightening us on the explosive origins of the Victorian Volcanic Plains.

Dr Birgita Hansen Federation Uni
 Sharing the latest research on the intercontinental migration of Latham's Snipe

Dr Greg Kerr Nature Glenelg Trust
 Explains what makes a wetland healthy and their importance in a drying climate.

Dr John Webb La Trobe University
 Talks about hydrogeology: the relationship between basalt and water - both above and below ground.

Dr Inka Veltheim TBC Arthur Rylah Institute
 With insights on SW Victoria's Brolga population

Penshurst Historical Society
 Will share stories and historical maps and documents about local wetland and waterbirds

Glenelg Hopkins CMA

VICTORIA State Government

Victorian Landcare Grants

Business Facade Improvement Program

NOW OPEN

Council's annual Business Facade Improvement Program is now open with grants of up to \$5000 available on a \$1:\$1 basis for eligible businesses across the shire.

The work must improve the building and street face by doing more than maintenance.

Head to www.moyne.vic.gov.au/facade to find out more and how to apply!

Applications close Friday 12 September.

Spouting works complete at Hawkesdale Pool

Tricky curved spouting works at the Hawkesdale pool were completed last week by our maintenance team. No more water dripping on our pool users.

The team is also in the process of upgrading the vinyl flooring in the public accessible toilets at the pool so it will be out of action during this time. The male and female public toilets will still be open for use.



July Ordinary Council Meeting 2025

Ordinary Council Meeting outcomes:

Item 2.1 Mortlake Market Square Landscape Design Master Plan

Councillors voted 6/1 to adopt

Item 2.2 Nirranda Recreation Reserve Master Plan

Councillors voted unanimously to adopt

Item 2.3 Festival and Event Funding 25/26

Councillors voted unanimously to approve

Item 2.4 Creative Change Grant Funding Guidelines

Councillors voted 6/1 to endorse

Item 2.5 Economic Development Strategy 2025-2029

Councillors voted unanimously to adopt

Item 2.6 Moyne Caravan Parks - Refund and Cancellation Policy

Councillors voted unanimously to approve

Item 2.7 Road Management Plan and Register of Public Roads

Councillors voted unanimously to adopt

Item 2.8 Asset Plan Framework 2025

Councillors voted unanimously to release

Item 2.9 Ryan Corner Wind Farm CEC Representative

Councillors voted unanimously to endorse

Item 2.10 Community Satisfaction Survey - 2025 Research Report

Councillors voted unanimously to receive

Item 3.2 Councillor notice of motion - Cr. Lockett

Councillors voted 4/3 to pass the motion to remove the prayer from the agenda at the beginning of Ordinary and Special Council Meetings

Drinks

Water – 600 ml	\$2.00
Nippy's Milk – 250 ml – Strawberry, Honeycomb, Chocolate, Coffee	\$2.40
Fresha Juice – 250 ml - Apple or Apple & Blackcurrant or Orange	\$2.40
Nippy's Milk – 375 ml – Strawberry, Honeycomb, Chocolate, Coffee, Banana	\$3.50
Fresha Juice – 500 ml - Apple & Blackcurrant or Orange	\$3.50

Frozen Yoghurt or Icy Poles – lunchtime only

Lemonade Icy Poles (gluten free)	\$1.60
Zooper Dooper – Maximum of 2 – Temp must be over 25°C	\$0.50
Dixie Cups (gluten free)	\$2.50
Frozen Yoghurt	\$2.50

Chips

Chips (28 g) - Honey Soy or Sea Salt or Salt & Vinegar (gluten free)	\$1.40
Snaps (28 g) (gluten free)	\$1.40



Monday	Hot Dogs Baked Potatoes	\$3.00 \$6.00
Tuesday	Butter Chicken & Rice	\$6.00
Wednesday	Beef pasta Bake	\$6.00
Thursday	Chicken Fried Rice	\$6.00
Friday	Chicken Enchilada	\$6.00

Dim Sims available at recess on Monday, Wednesday & Friday \$1.00

Canteen Menu – 2025 term 3

Recess and Lunch

Mini Chicken Wrap -	\$2.20
Chicken Mini Muffin Pizza	\$1.80
Ham, Cheese Mini Muffin Pizza	\$1.80
Ham, Cheese, Pineapple Mini Muffin Pizza	\$1.80
Egg and Bacon Muffin	\$3.00
Hash Browns	\$1.00
Sweet Chilli Chicken Tender Toastie	\$1.80
Party Pies / Sausage Rolls	\$3.00
Homemade Slices / Muffins / Banana Bread	\$1.80
Homemade Biscuits	\$1.80
Truffles	\$1.20
Banana bread - (gluten free) must be pre-ordered	\$0.60
	\$1.80

Lunch Only

Angel Bay Light Beef Burgers with Salad	\$6.00
85gm Canteen Approved Chicken Burger with Salad	\$6.00
Salad Roll or Sandwich with or without Meat	\$6.00
Salad Tubs with or without Meat	\$6.00
Sandwiches - selected fillings eg: egg & lettuce / ham & pickles (must be pre ordered)	\$3.00
Veggie Burger with lettuce, tomato, beetroot, cheese, mayo on a wholemeal roll	\$6.00
Sweet Chilli Chicken Wrap - with lettuce, tomato, mayo and cheese	\$6.00
Chicken Crackles and Wedges	\$4.00
Pastie slab - must be pre-ordered	\$4.50
Meat Pie	